

# Business Result for the Year Ended March 31, 2010

May 10, 2010

TOYO TIRE & RUBBER CO., LTD.

## Major Topics

1. Consolidated Business Results for the Fiscal Year Ended March 31, 2010 (FY2009)
2. Consolidated Business Forecast for the Fiscal Year Ending March 31, 2011 (FY2010)
3. Supplemental Information on Business Results and Forecasts

The forward-looking statement contained in these business forecasts and plans are based on information available at the current time and may contain potential risks and uncertainties.

Therefore, please keep in mind that actual results may, due to a variety of factors, differ from those expressed in the forward-looking statements.

# 1. Consolidated Business Results for the Fiscal Year Ended March 31, 2010 (FY2009) (1)

Business Results : Although Sales Revenues, Operating Income, Ordinary Income and Net Income Profitability Significantly Improved

(Unit : Millions of yen)

The Full Year (Apr.1 ~ Mar.31)				The Fourth Quarter (Jan.1 ~ Mar.31)		
	<b>FY 2009</b>	FY 2008	(Yr.-on-Yr.)	<b>FY 2009</b>	FY 2008	(Yr.-on-Yr.)
Net Sales	<b>287,726</b>	328,371	<b>87.6%</b>	<b>69,981</b>	59,014	<b>118.6%</b>
Operating Income (Loss)	<b>8,664</b>	(2,964)	—	<b>2,312</b>	(3,575)	—
Ordinary Income (Loss)	<b>8,979</b>	(6,179)	—	<b>2,103</b>	(4,641)	—
Net Income (Loss)	<b>2,957</b>	(10,722)	—	<b>2,537</b>	(732)	—
Dividend (Yen)	<b>3 (Planned)</b>	0	—			

# 1. Consolidated Business Results for the Fiscal Year Ended March 31, 2010 (FY2009) (2)

## Results by Business Segment

( Unit : Millions of yen )

The Full Year (Apr.1 ~ Mar.31)					The Fourth Quarter (Jan.1 ~ Mar.31)		
		FY 2009	FY 2008	(Yr.-on-Yr.)	FY 2009	FY 2008	(Yr.-on-Yr.)
Tire	Net Sales	214,291	242,009	88.5%	50,208	44,566	112.7%
	Operating Income (Loss)	6,933	(1,395)	—	1,469	(2,573)	—
DiverTech & Other Businesses	Net Sales	73,434	86,362	85.0%	19,772	14,449	136.8%
	Operating Income (Loss)	1,760	(1,559)	—	853	(996)	—
Eliminations	Operating Income (Loss)	(29)	(9)	—	(10)	(6)	—

※Net sales do not include intersegment sales and transfer amounts.

# 1. Consolidated Business Results for the Fiscal Year Ended March 31, 2010 (FY2009) (3)

## Result by Geographic Segment

( Unit : Millions of yen )

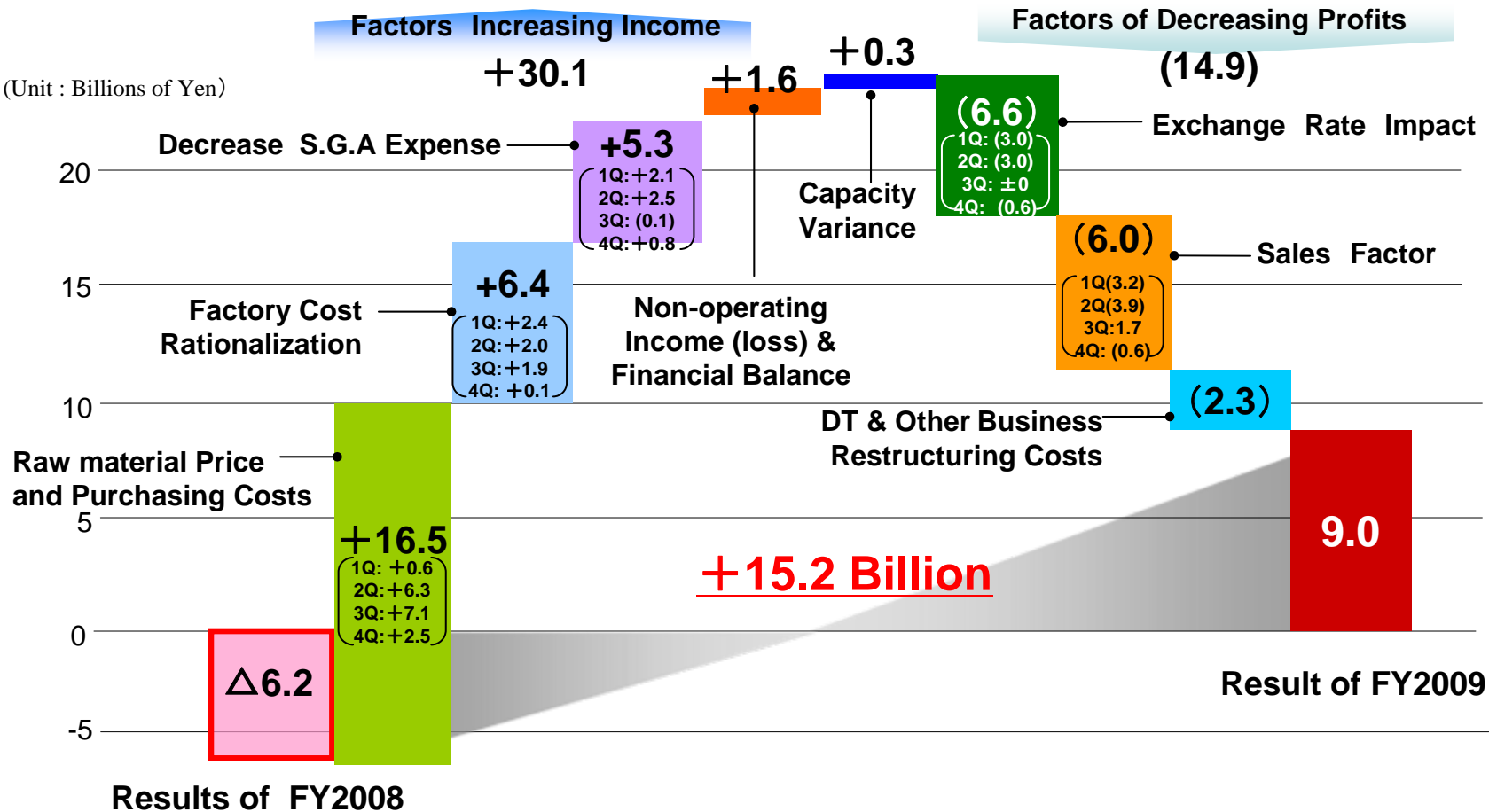
The Full Year (Apr.1 ~ Mar.31)					The Fourth Quarter (Jan.1 ~ Mar.31)		
		FY 2009	FY 2008	(Inc/Dec)	FY 2009	FY 2008	(Inc/Dec)
Japan	Net Sales	<b>159,908</b>	180,687	(20,779)	<b>38,221</b>	31,238	+6,983
	Operating Income (Loss)	<b>4,465</b>	(9,723)	+14,188	<b>573</b>	(6,588)	+7,161
North America	Net Sales	<b>86,358</b>	98,554	(12,196)	<b>21,331</b>	18,659	+2,672
	Operating Income	<b>2,960</b>	2,035	+925	<b>698</b>	(383)	+1,081
Others	Net Sales	<b>41,458</b>	49,128	(7,670)	<b>10,427</b>	9,117	+1,310
	Operating Income	<b>1,687</b>	1,772	(85)	<b>472</b>	278	+194
Eliminations	Operating Income (Loss)	<b>(448)</b>	2,950	(3,398)	<b>568</b>	3,116	(2,548)

※Net sales do not include intersegment sales and transfer amounts.

# 1. Consolidated Business Results for the Fiscal Year March 31, 2010 (FY2009) (4)

## Factors contributing to the change in ordinary income (Year-on-Year) (Unit :Millions of Yen)

Results of FY2008	Results of FY2009	The Changes in Ordinary Income
△6,179	8,979	+15,158



## 2. Consolidated Business Forecast for the Fiscal Year Ending March 31, 2011 (FY2010) (1)

### Consolidated Business Performance

: Expected achieving Forecast of Net Income, Dividend Increase to 5 Yen

(Unit : Millions of Yen)

	Forecast for FY2010	Result of FY2009	(Yr.-on-Yr.)
Net Sales	<b>300,000</b>	287,726	104.3%
Operating Income	<b>10,400</b>	8,664	120.0%
Ordinary Income	<b>7,700</b>	8,979	85.8%
Net Income	<b>4,000</b>	2,957	135.3%
Dividend (Yen)	<b>5 Yen (Planned)</b>	3 Yen (Planned)	—

Forecast for 1 <sup>st</sup> half of FY2010	Result of 1 <sup>st</sup> half of FY2009	(Yr.-on-Yr.)
<b>141,000</b>	129,609	108.8%
<b>3,100</b>	△1,300	—
<b>1,900</b>	△1,232	—
<b>800</b>	△1,976	—

## 2. Consolidated Business Forecast for the Fiscal Year Ending March 31, 2011 (FY2010) (2)

### Forecast by Business Segment

(Unit : Millions of yen)

		Forecast for FY2010	Result of FY2009	(Yr.-on-Yr.)
Tires	Net Sales	<b>227,800</b>	214,291	106.3%
	Operating Income	<b>8,400</b>	6,933	121.2%
DiverTech & Other Businesses	Net Sales	<b>72,200</b>	73,434	98.3%
	Operating Income	<b>2,000</b>	1,760	113.6%
Eliminations	Operating Income	—	(29)	—

Forecast of 1 <sup>st</sup> half for FY2010	Result of 1 <sup>st</sup> half of FY2009	(Yr.-on-Yr.)
<b>106,000</b>	96,001	110.4%
<b>2,400</b>	(1,235)	—
<b>35,000</b>	33,607	104.1%
<b>700</b>	(47)	—
<b>-</b>	(17)	—

### Forecast by Geographic Segment

(Unit : Millions of yen)

		Forecast for FY2010	Result of FY2009	Increase (Decrease)
Japan	Net Sales	<b>155,400</b>	159,908	(4,508)
	Operating Income	<b>6,900</b>	4,465	+2,435
North America	Net Sales	<b>97,100</b>	86,358	+10,742
	Operating Income (Loss)	<b>2,600</b>	2,960	(360)
Others	Net Sales	<b>47,500</b>	41,458	+6,042
	Operating Income	<b>1,900</b>	1,687	+213
Eliminations	Operating (Loss)	<b>(1,000)</b>	(448)	(552)

Forecast of 1 <sup>st</sup> half for FY2010	Result of 1 <sup>st</sup> half of FY2009	Increase (Decrease)
<b>71,500</b>	71,250	+250
<b>1,200</b>	(1,374)	+2,574
<b>47,500</b>	39,741	+7,759
<b>1,600</b>	331	+1,269
<b>22,000</b>	18,617	+3,383
<b>850</b>	524	+326
<b>(550)</b>	(782)	+232

※Net sales do not include intersegment sales and transfer amounts.

## 2. Consolidated Business Forecast for the Fiscal Year Ending March 31, 2011 (FY2010) (3)

### Factors Contributing to the Change in Ordinary Income (Year-on-Year) (Unit : Millions of Yen)

Results of FY2009	Forecasts for FY2010	Inc. (Dec.)
8,979	7,700	(1,279)

**Full Year**

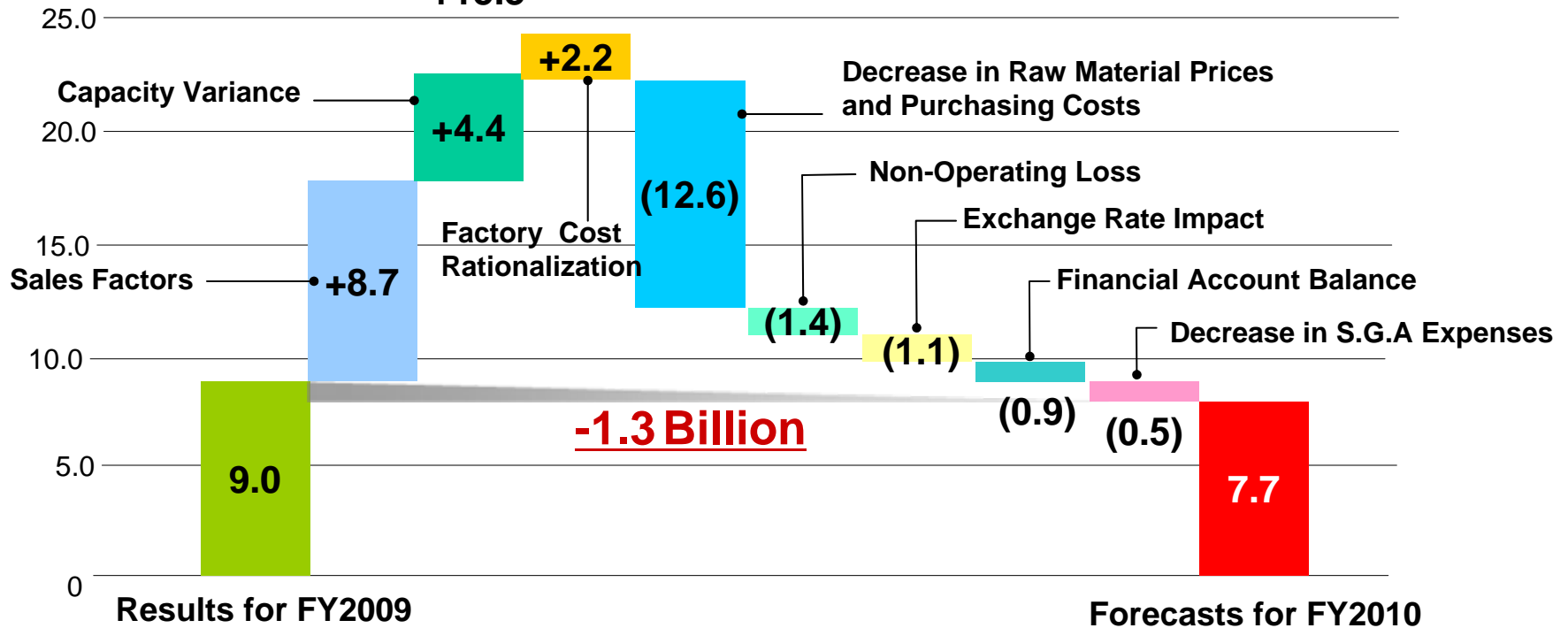
(Unit : Billions of Yen)

Factors increasing profits

**+15.3**

Factors decreasing profits

**(16.6)**



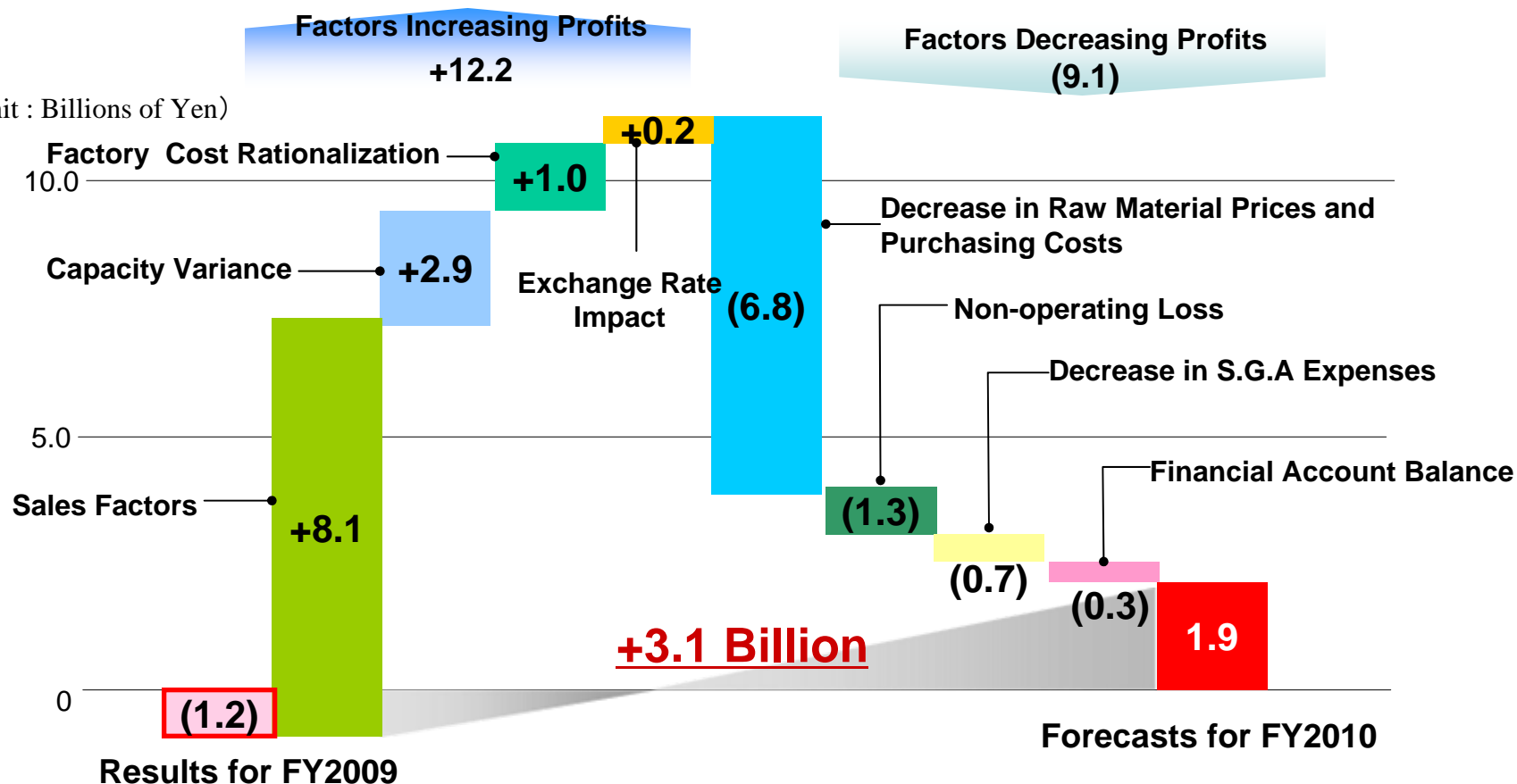
## 2. Consolidated Business Forecast for the Fiscal Year Ending March 31, 2011 (FY2010) (4)

### Factors Contributing to the Change in Ordinary Income (Year-on-Year) (Unit : Millions of Yen)

Results of 1st half of FY2009	Forecasts for 1st half of FY2010	Inc. (Dec.)
(1,232)	1,900	+3,132



(Unit : Billions of Yen)



### 3. Supplemental Information on Business Results and Forecasts (1)

#### Tires : Sales Volumes by Region (Year-on-Year)

(%)

Region	FY2007	FY2008	FY2009	Forecasts for the 1st Half of FY2010	Forecasts for FY2010
Japan	99	86	114	109	104
Overseas Total	115	100	96	113	107
North America	114	90	95	115	108
Europe	110	102	87	118	111
Grand Total	108	94	103	111	106

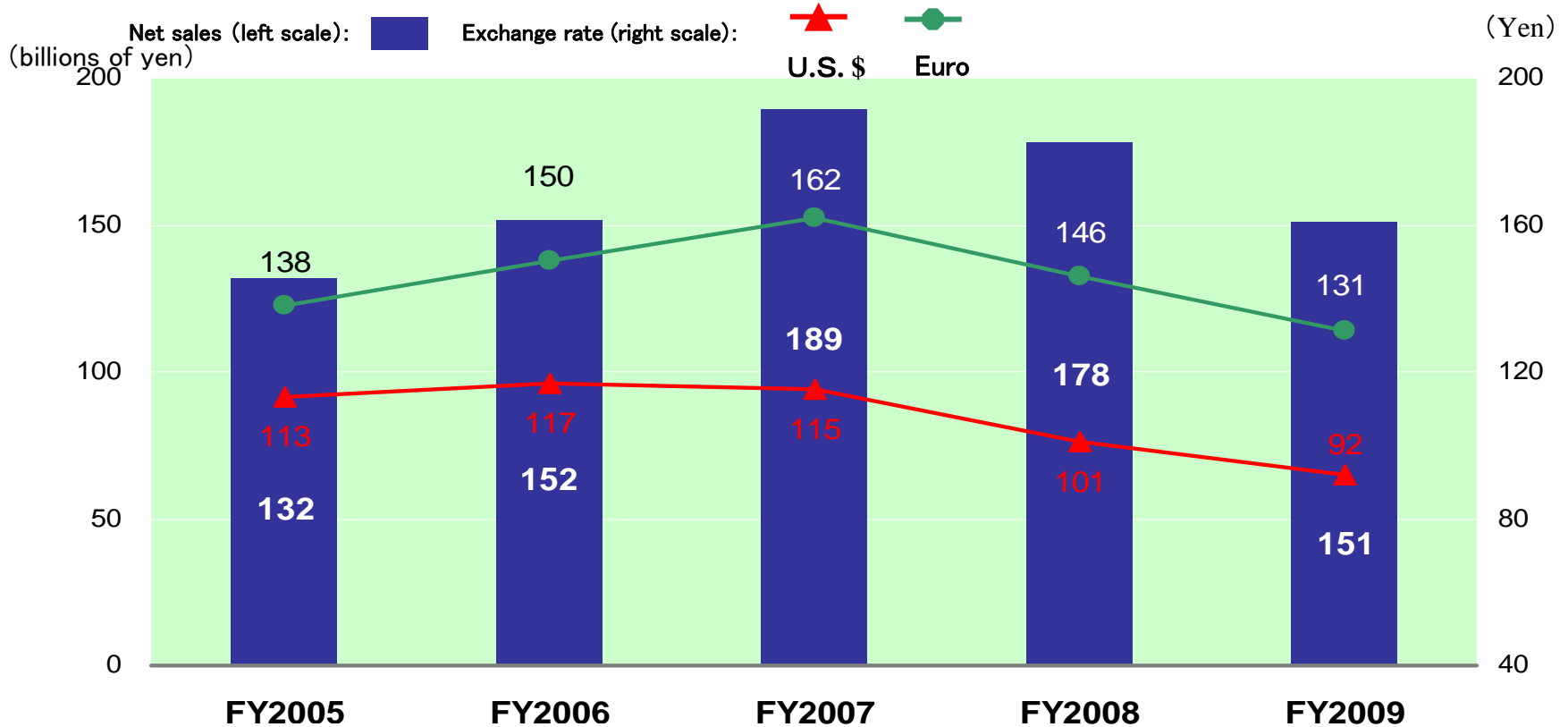
#### Change in Tire Production (New Rubber Volumes)

(Unit : Thousand Tons)

Region	FY2007	FY2008	FY2009	Forecasts for the 1st Half for FY2010	Forecasts for FY2010
Japan	156.0	135.9	133.1	77.2	154.4
Overseas	40.0	39.4	34.7	15.7	31.2
Total	196.0	175.3	167.8	92.9	185.6

※Production from joint venture companies and outsourcing are included based on the volumes the company has received.

## Changes in overseas sales and exchange rates



### Forecasts exchange rates for FY2010

(Maker sales basis)

	the 1 <sup>st</sup> Half of FY2010	Full Year
<b>U.S.\$ :</b>	90 yen/US\$	90 yen/US\$
<b>Euro :</b>	120 yen/Euro	120 yen /Euro

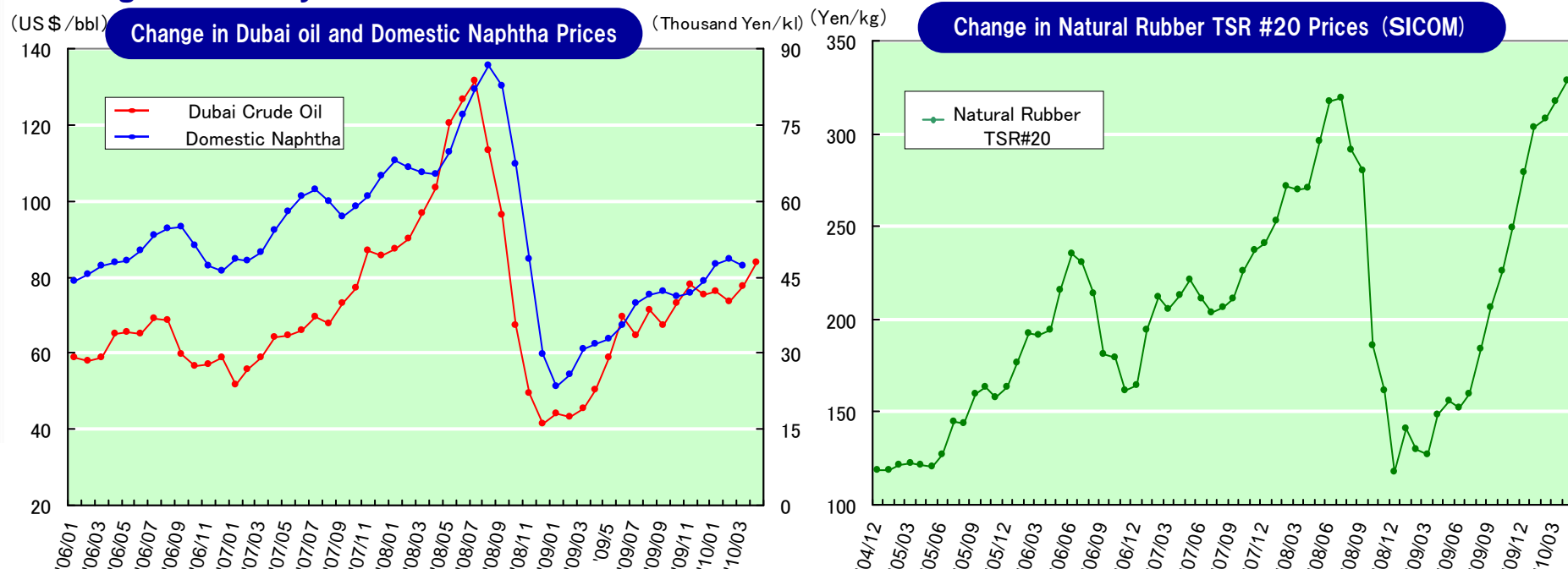
### Exchange rate sensitivity

(Impact of 1 yen fluctuation on ordinary income)

- **U.S.\$:** 0.2 billion yen/year
- **Euro:** 0.1 billion yen/ year

### 3. Supplemental Information on Business Results and Forecasts (3)

#### Change in Primary Material Prices



#### Price Rise and Impact by Primary Raw Material (Ordinary Income Basis)

(Unit : Billions of Yen)

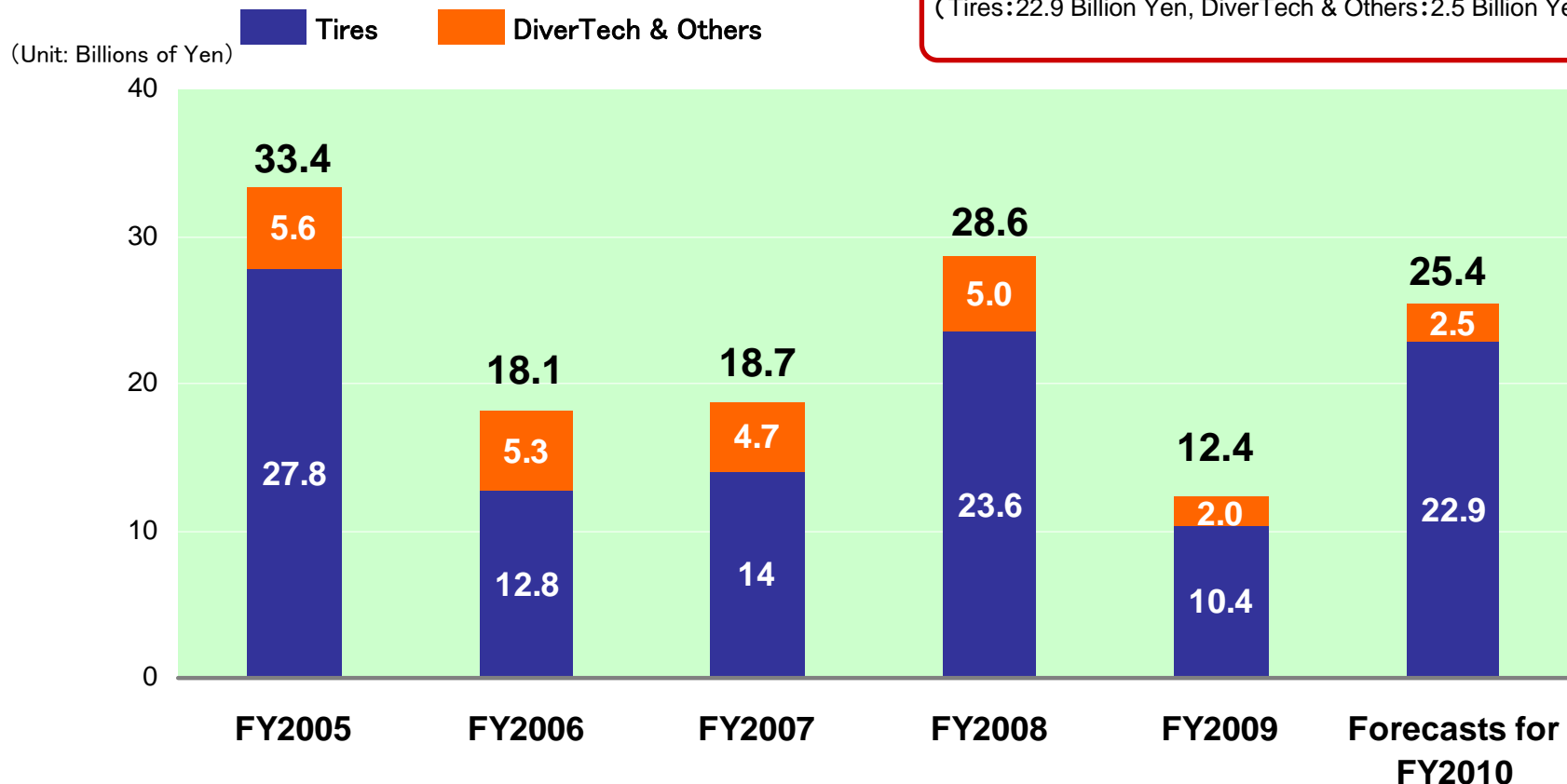
Raw Material	FY 2005	FY 2006	FY 2007	FY 2008	FY 2009
Natural Rubber	(1.5)	(6.4)	(1.5)	(6.2)	+5.2
Product of petroleum (naphtha), Compounding Agents and Chemicals	(5.8)	(5.1)	(3.6)	(7.8)	+10.3
Other Raw Materials	(2.0)	(0.9)	(0.3)	(2.9)	+0.4
Goods Purchased	0	(0.8)	(0.7)	(1.8)	+0.6
<b>Total</b>	<b>(9.3)</b>	<b>(13.2)</b>	<b>(6.1)</b>	<b>(18.7)</b>	<b>+16.5</b>

## Change in Capital Investment (Property, Plant and Equipment)

**FY2010 Forecasts**

**Capital Investment :25.4 Billion Yen**

(Tires:22.9 Billion Yen, DiverTech & Others:2.5 Billion Yen)



※In this table, the figures for DiverTech & Others from FY2004 to FY2006 are the combined figures of the former business segments, including Chemical & Industrial Products, Automotive Parts and Others.

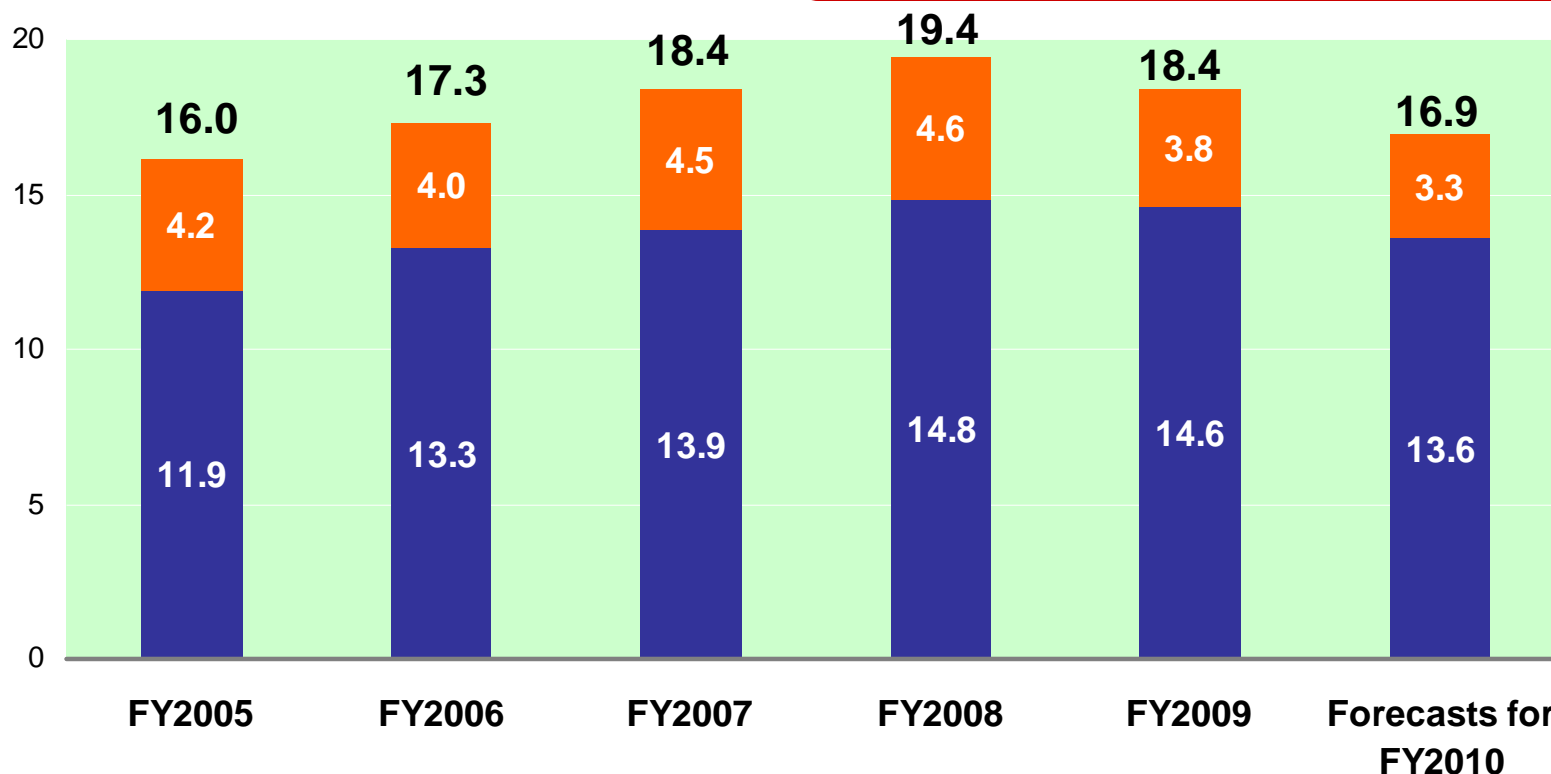
## Change in Depreciation Expenses (Property, Plant and Equipment)

### FY2010 Forecasts

**Depreciation Expenses: 16.9 Billion Yen**

(Tires: 13.6 Billion Yen, DiverTech & Others: 3.3 Billion Yen)

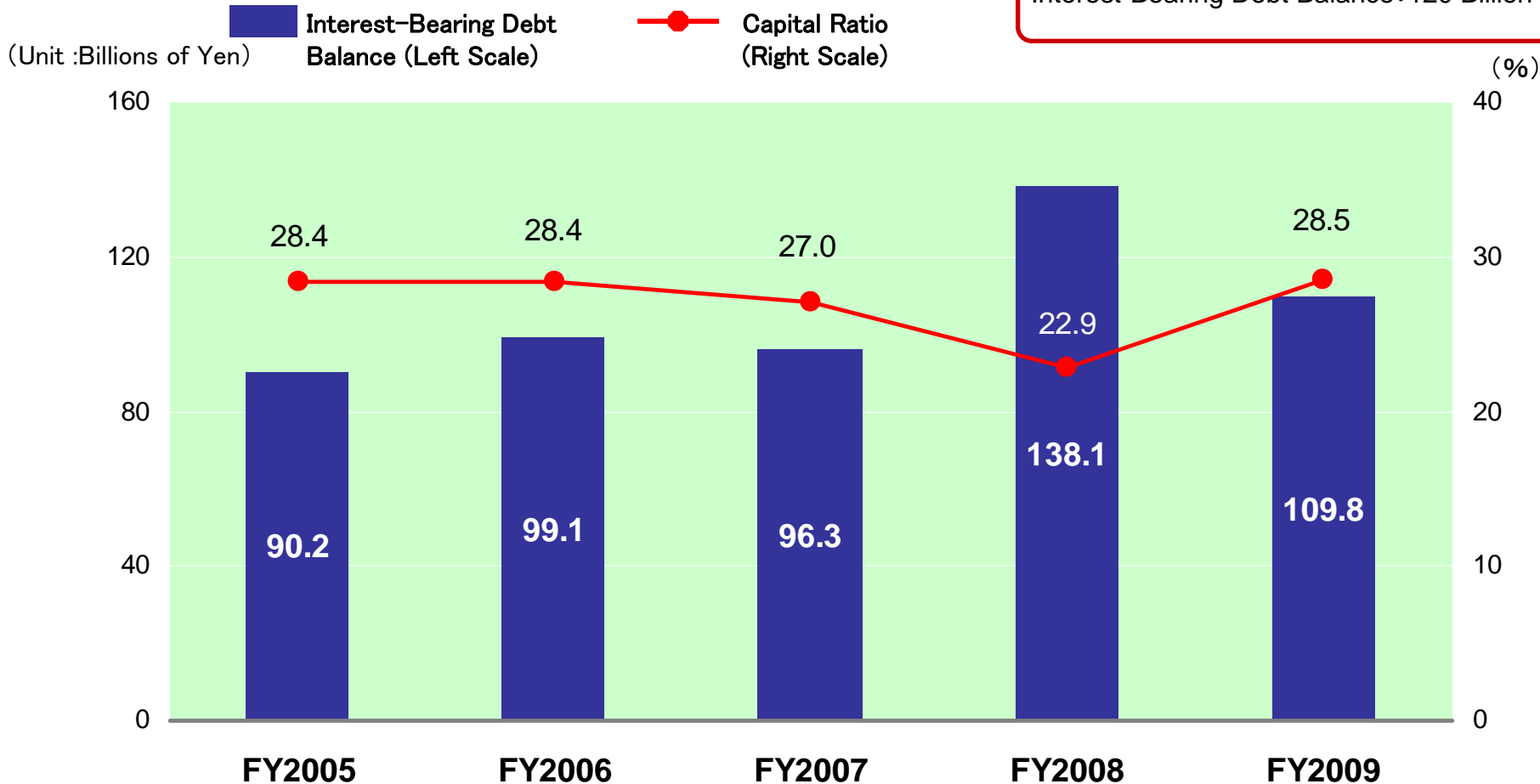
(Unit :Billions of Yen)



※In this table, the figures for DiverTech & Others from FY2005 to FY2006 are the combined figures of the former business segments, including Chemical & Industrial Products, Automotive Parts and Others.

## Change in Interest-Bearing Debt Balance and Capital Ratio

**FY2009 Year-End Forecast**  
Interest-Bearing Debt Balance: 120 Billion Yen



### 3. Supplemental Information on Business Results and Forecasts (7)

#### Business Results: Compared quarter by Previous Year

••• Ensure improvement in revenue after 2Q of FY2009

(Unit : Millions of Yen)

		1Q	2Q	3Q	4Q	Full-Year
Net Sales	FY2009	62,373	67,236	88,136	69,981	287,726
	FY2008	86,639	86,181	96,537	59,014	328,371
	Change	(24,266)	(18,945)	(8,401)	+10,967	(40,645)
	Compared	72.0%	78.0%	91.3%	118.6%	87.6%
Operating Income	FY2009	(3,054)	1,754	7,652	2,312	8,664
	FY2008	1,259	(82)	(565)	(3,575)	(2,964)
	Change	(4,313)	+1,836	+8,217	+5,887	+11,628
	Compared	—	—	—	—	—
Ordinary Income	FY2009	(2,943)	1,711	8,108	2,103	8,979
	FY2008	1,205	(931)	(1,812)	(4,641)	(6,179)
	Change	(4,148)	+2,642	+9,920	+6,744	+15,158
	Compared	—	—	—	—	—
Net Income	FY2009	(2,620)	644	2,396	2,537	2,957
	FY2008	(1,438)	(776)	(7,776)	(732)	(10,722)
	Change	(1,182)	+1,420	+10,172	+3,269	+13,679
	Compared	—	—	—	—	—

### 3. Supplemental Information on Business Results and Forecasts (8)

#### Forecast by Business Segment: Another Quarter of the Previous year Compared

... Efforts for Recovering Earnings proceeding

(Unit : Millions of Yen)

			1Q	2Q	3Q	4Q	Full-Year
Tires	Net Sales	FY2009	47,151	48,850	68,082	50,208	214,291
		FY2008	62,141	60,370	74,932	44,566	242,009
		Change	(14,990)	(11,520)	(6,850)	+5,642	(27,718)
		Compared	75.9%	80.9%	90.9%	112.7%	88.5%
	Operating Income	FY2009	(2,489)	1,254	6,699	1,469	6,933
		FY2008	1,257	(126)	47	(2,573)	(1,395)
		Change	(3,746)	+1,380	+6,652	+4,042	+8,328
		Compared	—	—	—	—	—
DiverTech & Other Business	Net Sales	FY2009	15,221	18,386	20,055	19,772	73,434
		FY2008	24,498	25,810	21,604	14,449	86,362
		Change	(9,277)	(7,424)	(1,549)	+5,323	(12,928)
		Compared	62.1%	71.2%	92.8%	136.8%	85.0%
	Operating Income	FY2009	(557)	510	954	853	1,760
		FY2008	(0)	51	(614)	(996)	(1,559)
		Change	(557)	+459	+1,568	+1,849	+3,319
		Compared	—	1,000%	—	—	—

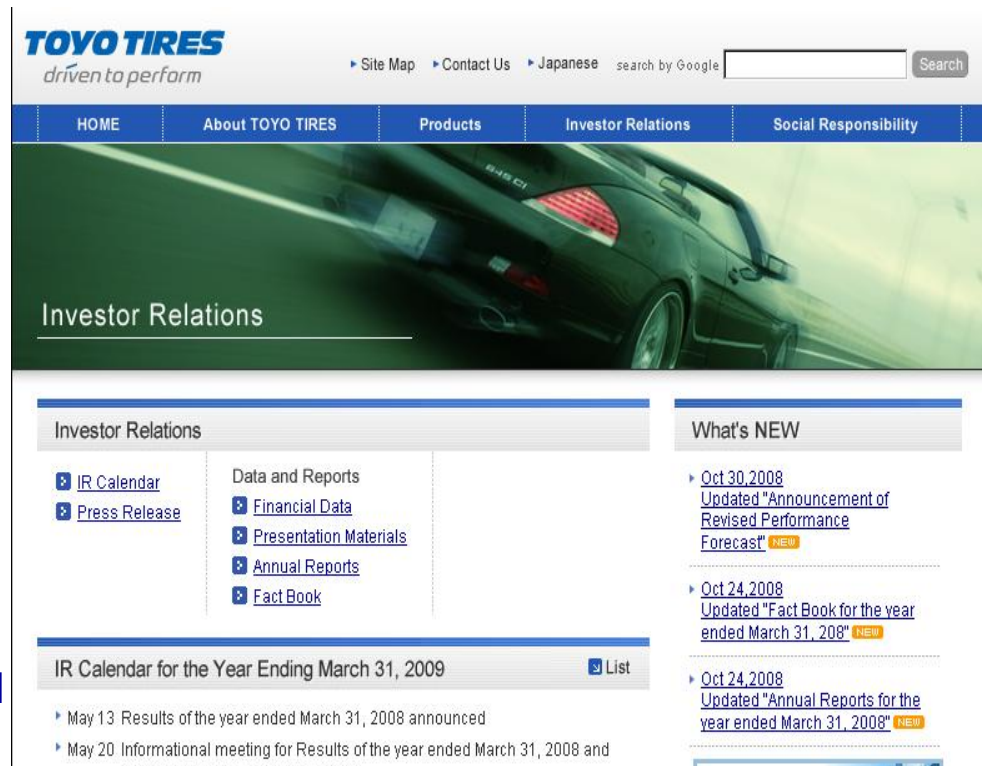
## ☆The Delivery Service for E-mail

### TOYO TIRES Mail news Contents

1. Press Release
2. IR News  
Financial Statement Reporting,  
Announcement of Revised Performance  
Forecasts, etc.
3. Others  
Environmental · Quality · Management  
News

For more information,  
please visit our web site

<http://www.toyo-rubber.co.jp/ir/index.html>




## Email News Delivery

Vision'15  
Medium-Term Business Plan'08

TOYO TIRES  
Email News Delivery

***TOYO TIRES***  
*driven to perform*